

# CredAbility.info

## Empower your Portfolio and Project Information

### Pricing model

The following is the basic model for using CredAbility on a software as a service basis.

Tier	User blocks	Basis	Cost
One	1-24	Per user, Per month	£9.50
Two	25-49	Per user, Per month	£9.00
Three	50-99	Per user, Per month	£8.50
Four	100-249	Per user, Per month	£8.00
Five	250 upwards	Maximum Cost, Per month	£2,000

### General model rules

The following are general rules that are used around the pricing model.

- You control how many users you have, not us.
- Prior to invoicing you each month, we will put you on the most appropriate tier.
- Invoices are raised on the 10th (or next working day) of the month for the previous calendar month, on 21 day terms.

### Annual model

If it is possible to commit to a number of users on an annual basis then.

- Tier 1 - 3 will gain a 5% discount on an annual invoice paid in advance.
- Tier 4 - 5 will gain a 10% discount on an annual invoice paid in advance.

[enquiries@credability.info](mailto:enquiries@credability.info)



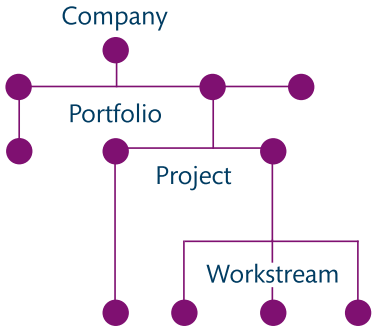
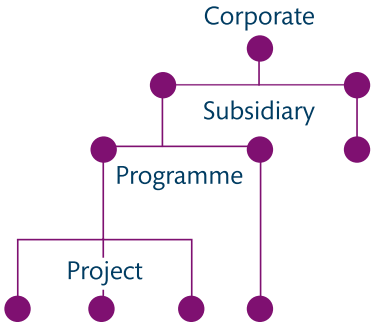
Risks

Time Management

Change Control

**Collaborate**  
Two companies can collaborate on a portfolio or project by invitation

**Hierarchy**  
Set it up to suit your requirements and reporting needs



Financial Control

Requirements

Actions

Defect Management

Issues